

FOR SALE
FOR LEASE

CLOVERDALE CORPORATE PARK

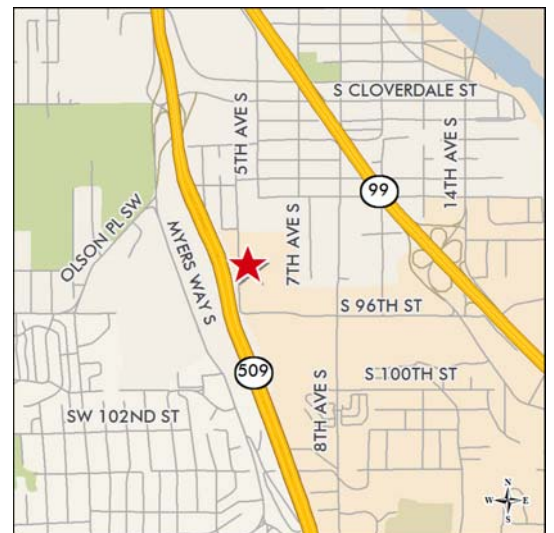
SEATTLE, WASHINGTON



AREA: 50,460 SF in Building A

CLEAR HEIGHT: 24'

- FEATURES:**
- Excellent access to SR 99
 - Visibility from SR-509
 - Potential to secure entire site
 - Condo option available
 - Ample parking and truck maneuverability
 - 15 dock-high doors
 - 2 large grade-level doors
 - No Seattle B&O tax



9400 4th Avenue South | Seattle, WA

FOR MORE
INFORMATION
PLEASE
CONTACT

John Gilliland

Vice President
206.442.2745
john.gilliland@cbre.com

John Sullivan

Vice President
206.442.2744
john.sullivan@cbre.com

Charlie Farra

Associate
206.442.2724
charlie.farra@cbre.com

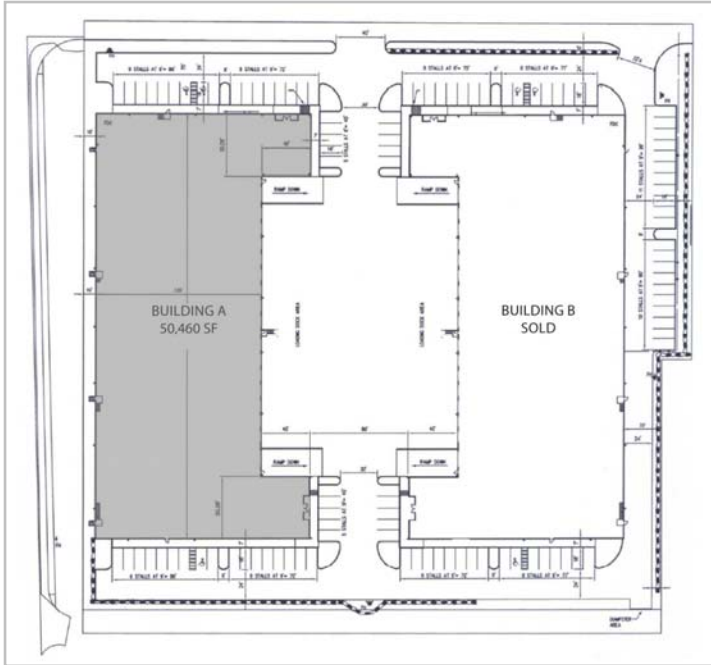
CBRE
CB RICHARD ELLIS

FOR SALE
FOR LEASE



CLOVERDALE CORPORATE PARK

9400 4TH AVENUE SOUTH :: SEATTLE, WASHINGTON



SITE PLAN

Developed by:



TARRAGON

FOR MORE
INFORMATION
PLEASE
CONTACT

John Gilliland

Vice President
206.442.2745
john.gilliland@cbre.com

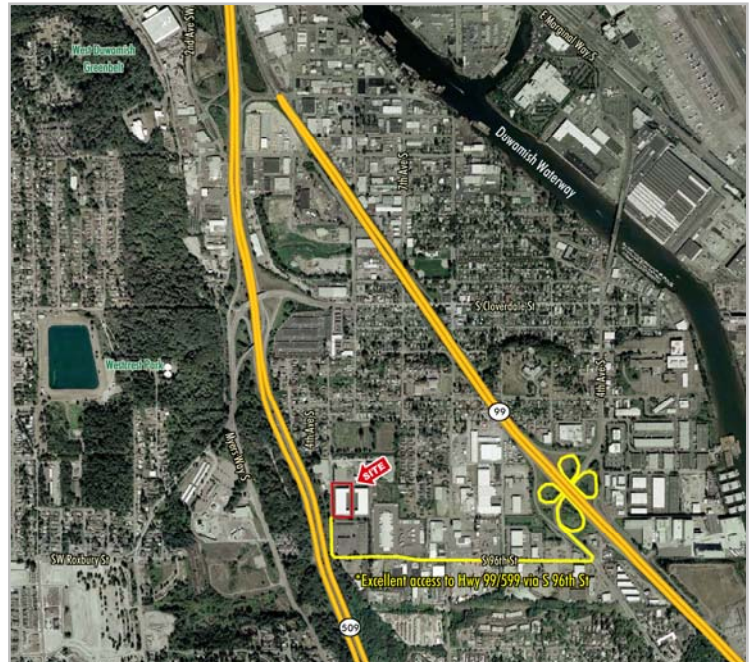
John Sullivan

Vice President
206.442.2744
john.sullivan@cbre.com

Charlie Farra

Associate
206.442.2724
charlie.farra@cbre.com

AERIAL



CB Richard Ellis | 701 Pike St | Suite 2100 | Seattle, WA 98101 | www.cbre.com/seattle

© 2009 CB Richard Ellis, Inc. The information above has been obtained from sources believed reliable. While we do not doubt its accuracy, we have not verified it and make no guarantee, warranty or representation about it. It is your responsibility to independently confirm its accuracy and completeness. Any projections, opinions, assumptions or estimates used are for example only and do not represent the current or future performance of the property. The value of this transaction to you depends on tax and other factors which should be evaluated by your tax, financial and legal advisors. You and your advisors should conduct a careful, independent investigation of the property to determine to your satisfaction the suitability of the property for your needs. dw 7-7-09

CBRE
CB RICHARD ELLIS